

Figure 1. Swabs enriched in TT



Figure 2. Samples put into 42°C incubator

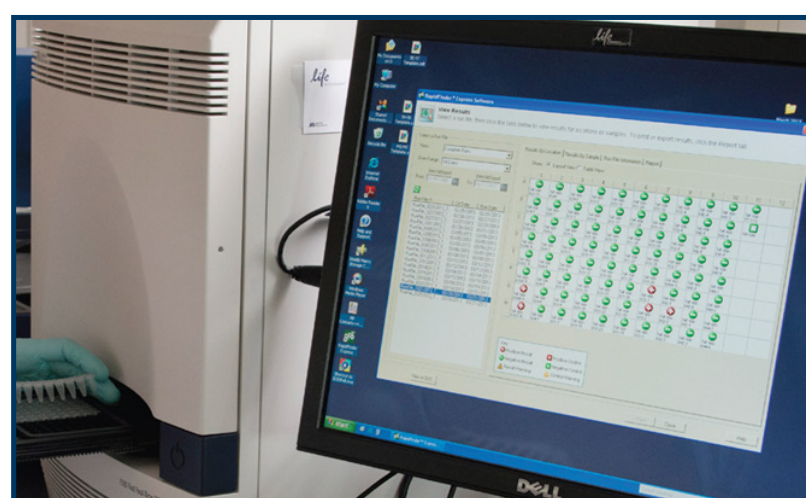


Figure 3. Salmonella Species RT PCR (Life Technologies)

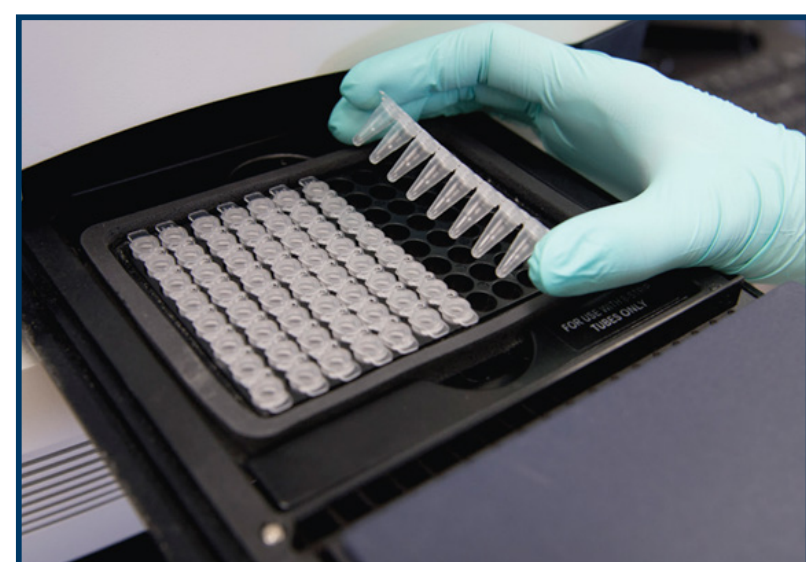


Figure 4. Salmonella Enteritidis RT PCR (Life Technologies)

Key	
TT:	Tetrathionate
BPW:	Buffered Peptone Water
MSRV:	Modified Semi-solid Rappaport Vassiliadis
TSI:	Triple Sugar Iron
XLT4:	Xylose Lysine Tergitol - 4
BGN:	Brilliant Green with Novobiocin
RT-PCR:	Reverse Transcriptase Polymerase Chain Reactions
NVSL:	National Veterinary Services Laboratory

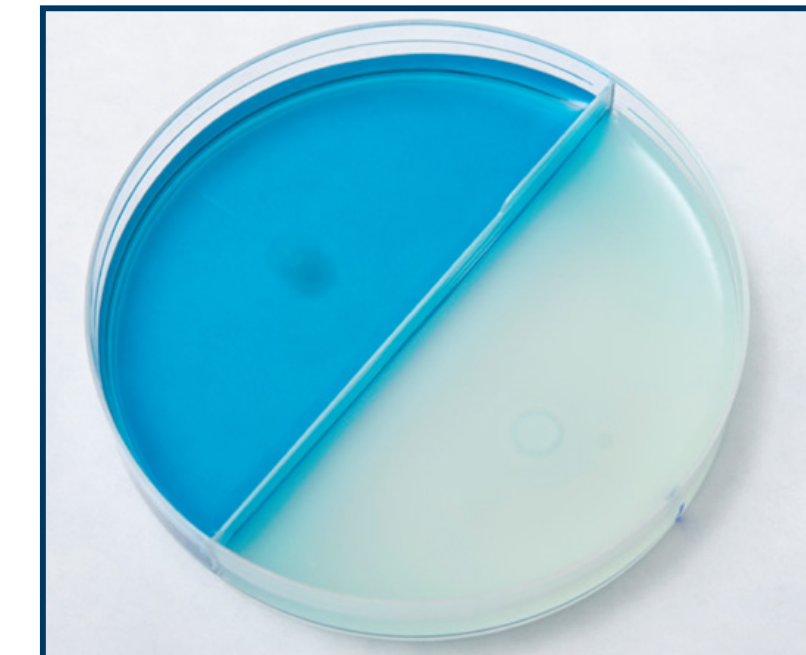
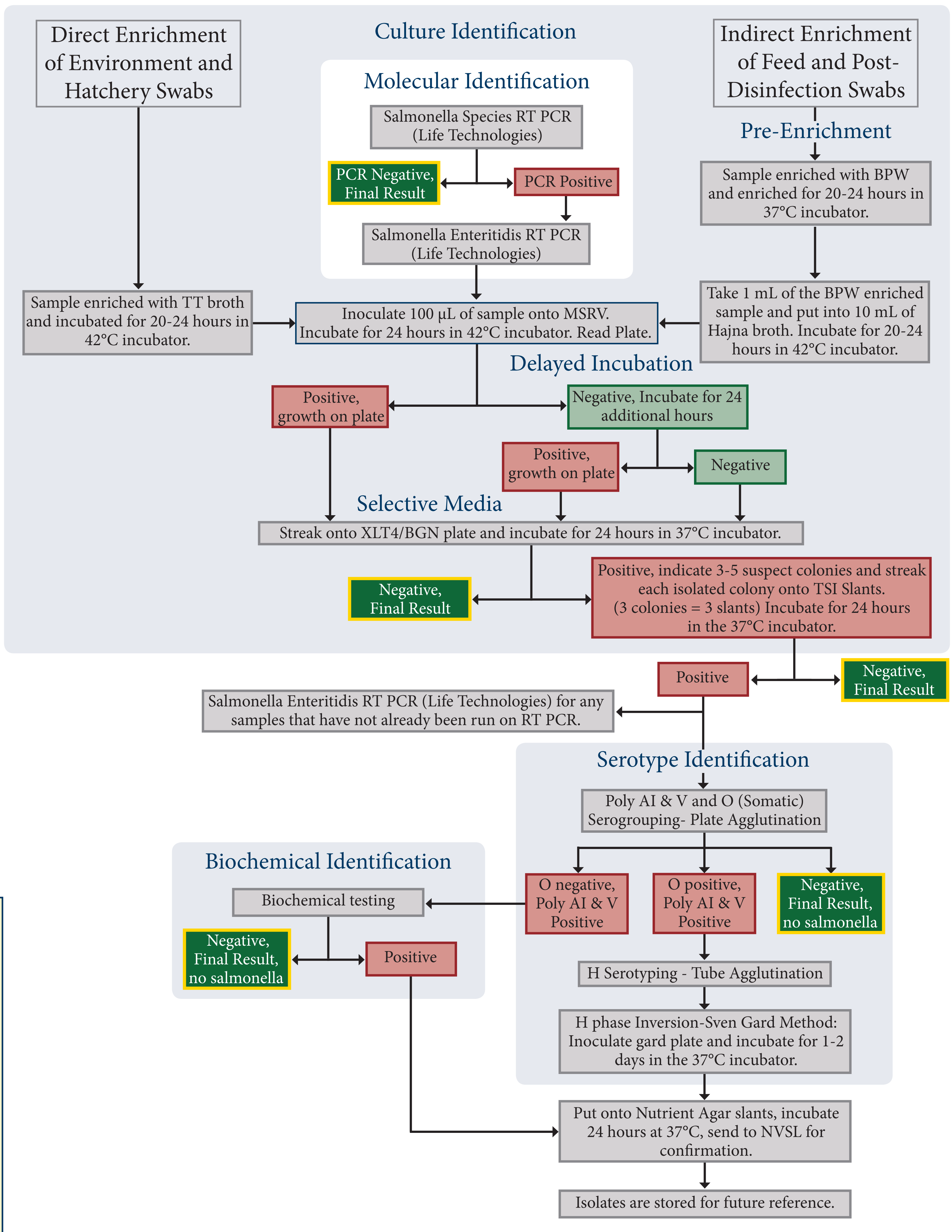


Figure 5. MSR plate - Tentative negative on left and tentative positive on right



Figure 6. XLT4 on left (black colonies) and BGN on right (red colonies)



Figure 7. Triple Sugar Iron Slant (Positive sample - pink slant, black butt)



Figure 8. Serotyping reagents