



## PHASE 1 (0–4 wk) – Target Body Weight 260 g

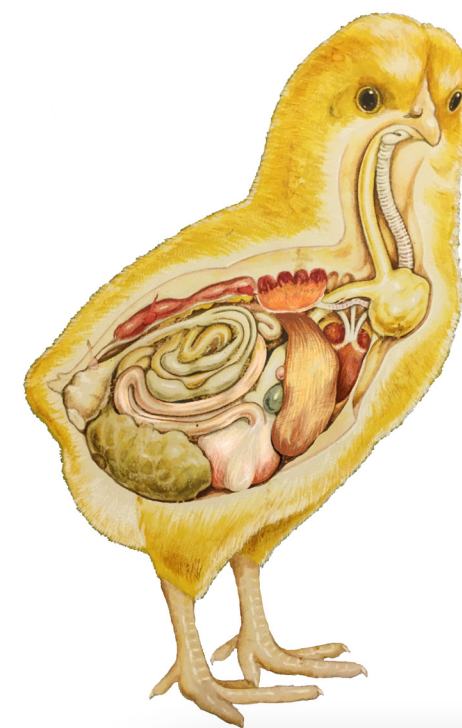
### DEVELOPMENT OF IMMUNE FUNCTION AND DIGESTIVE CAPACITY

**Management Tips:**

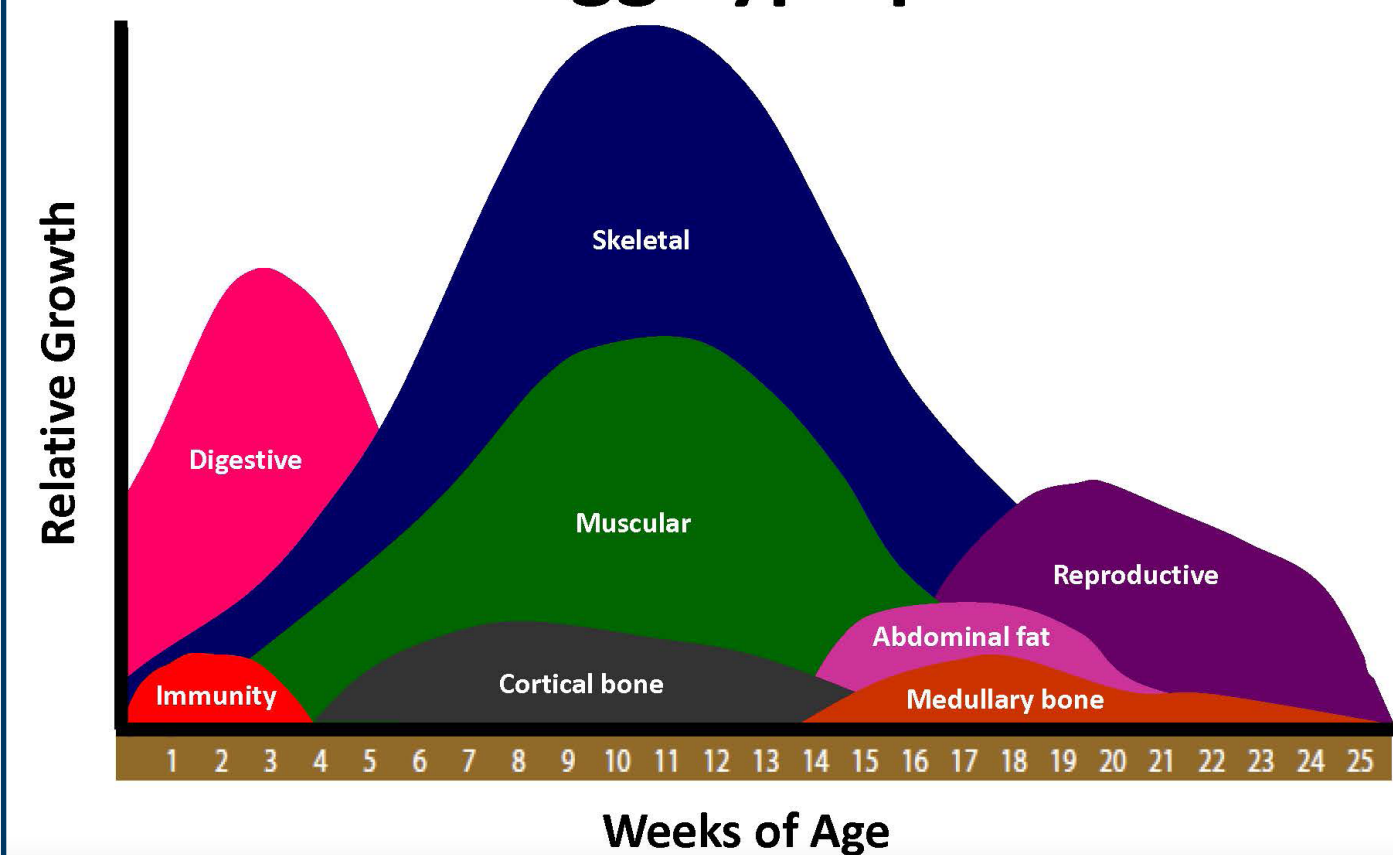
- Ensure ideal brooding management for a good start for chicks.
- Monitor weekly body weight gain and make necessary corrections in management.
- Follow the recommended step-down lighting program. Using intermittent light schedule in first week enhances growth and uniformity.
- Proper beak treatment at 7–10 days age or IRBT at hatchery.
- Grade the flocks to achieve good uniformity.
- Avoid overcrowding and ensure timely shifting to rearing cages.
- Change to Starter 2 diet after 180 g body weight.

**Nutrition Tips:**

- Use starter feed with recommended energy and amino acids to support rapid growth.
- Use crumbles for higher digestibility, uniform presentation of feed ingredients, and no selective feeding.
- Promote growth of healthy intestinal bacteria; much of digestion is done by healthy bacteria; careful use of antibiotic treatments, use probiotics and avoid animal proteins in feed.



## Growth and development of the egg-type pullet



## PHASE 2 (5–10 wk) – Target Body Weight 810 g

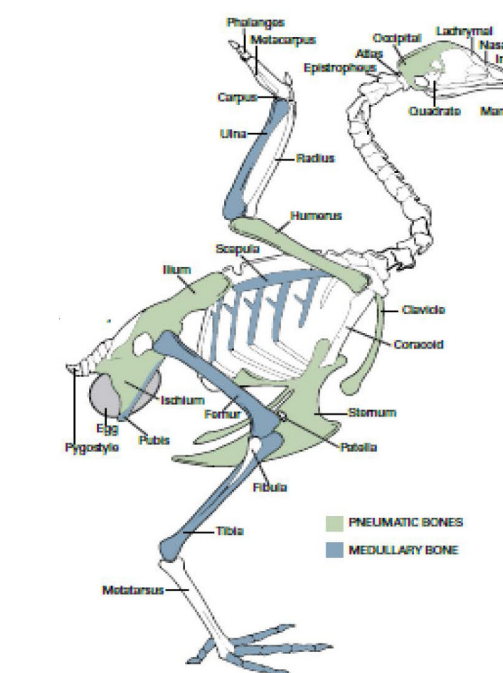
### PULLET BODY FRAME GROWTH, CORTICAL BONE DEPOSITION AND MUSCLE GROWTH

**Management Tips:**

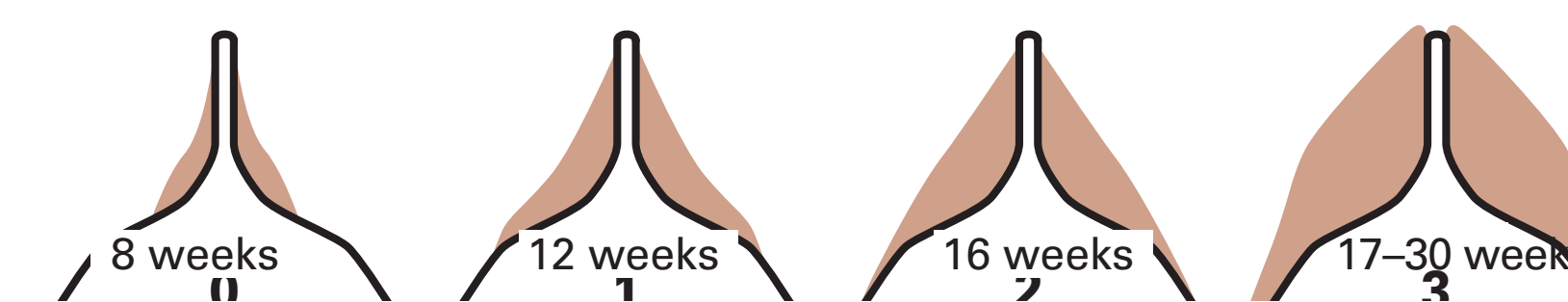
- Focus on attaining weekly target body weights.
- Maximize growth during Phases 1 and 2.
- Weigh birds individually and calculate uniformity (above 80% is ideal).
- Continue grading as needed to improve flock uniformity. Separate underweight birds and continue on starter feed.
- Practice step-down lighting program and no additional lights after 7 weeks of age.
- Provide adequate space for the birds.
- Reduce handling of birds as much as possible. No beak trimming during this phase.

**Nutrition Tips:**

- Switch to good quality grower mash when body weight reaches 430 g. Use 900–1200 micron feed particle size.
- Support good liver health to support skeletal growth – give choline (1800 mg per kg of diet) and 25 hydroxy D3 products.
- Use small particle limestone (1 mm).



**Breast Muscle Scores**



## PHASE 3 (11–16 wk) – Target Body Weight 1170 g

### BIRD REACHES ADULT SIZE, MEDULLARY BONE AND ABDOMINAL FAT BEGINS TO ACCUMULATE. SEXUAL MATURITY BEGINS.

**Management Tips:**

- Focus attaining weekly target body weight.
- Weigh birds individually and calculate uniformity (above 85% is ideal).
- Do second beak trimming if necessary at 13 weeks of age.
- Only day light to be provided during this period. Use the Hy-Line Lighting Application available at [www.hyline.com](http://www.hyline.com).
- Reduce handling of birds as much as possible.
- Move to layer cages before 16 weeks of age.
- Avoid overcrowding for good growth and uniformity.

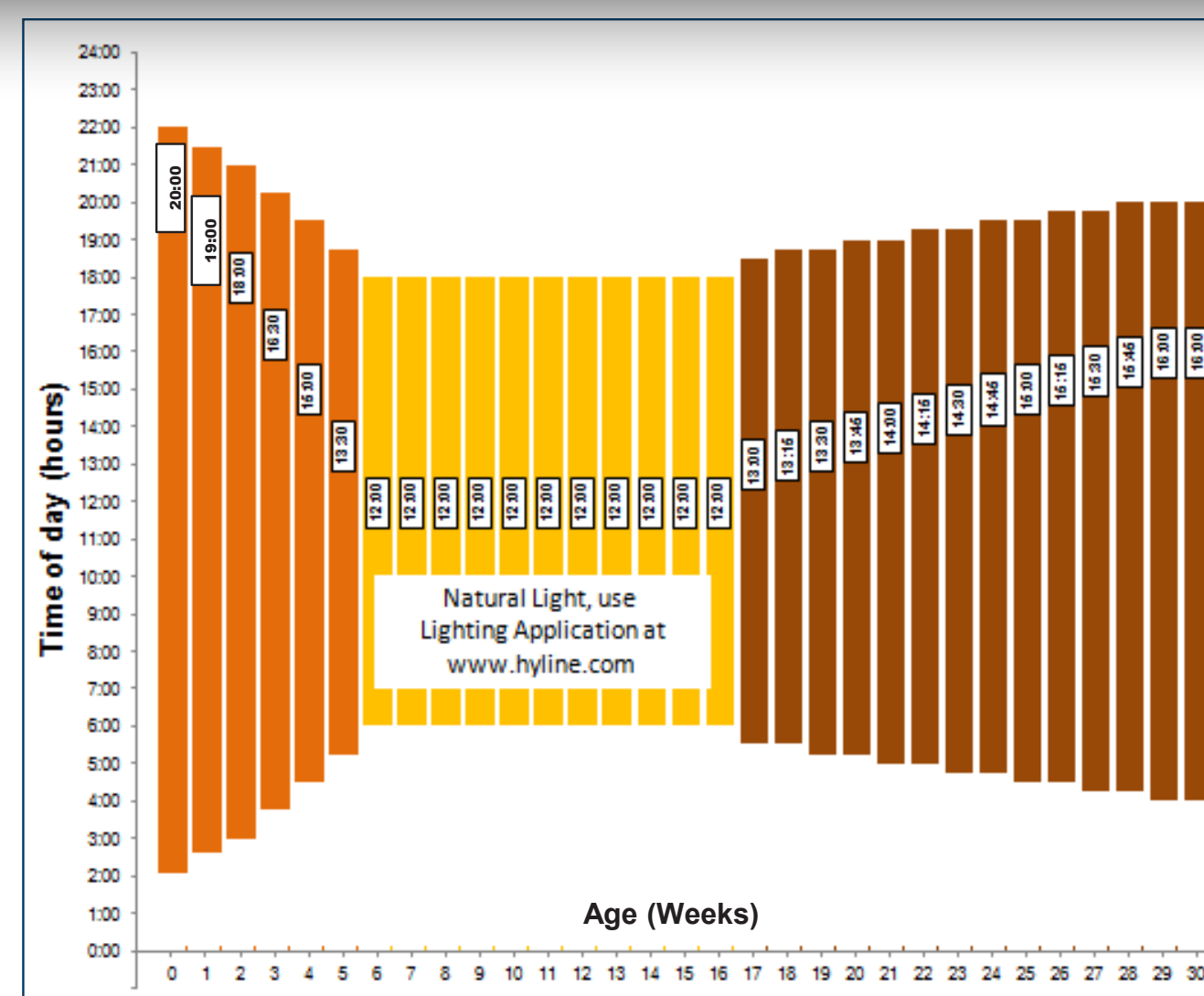
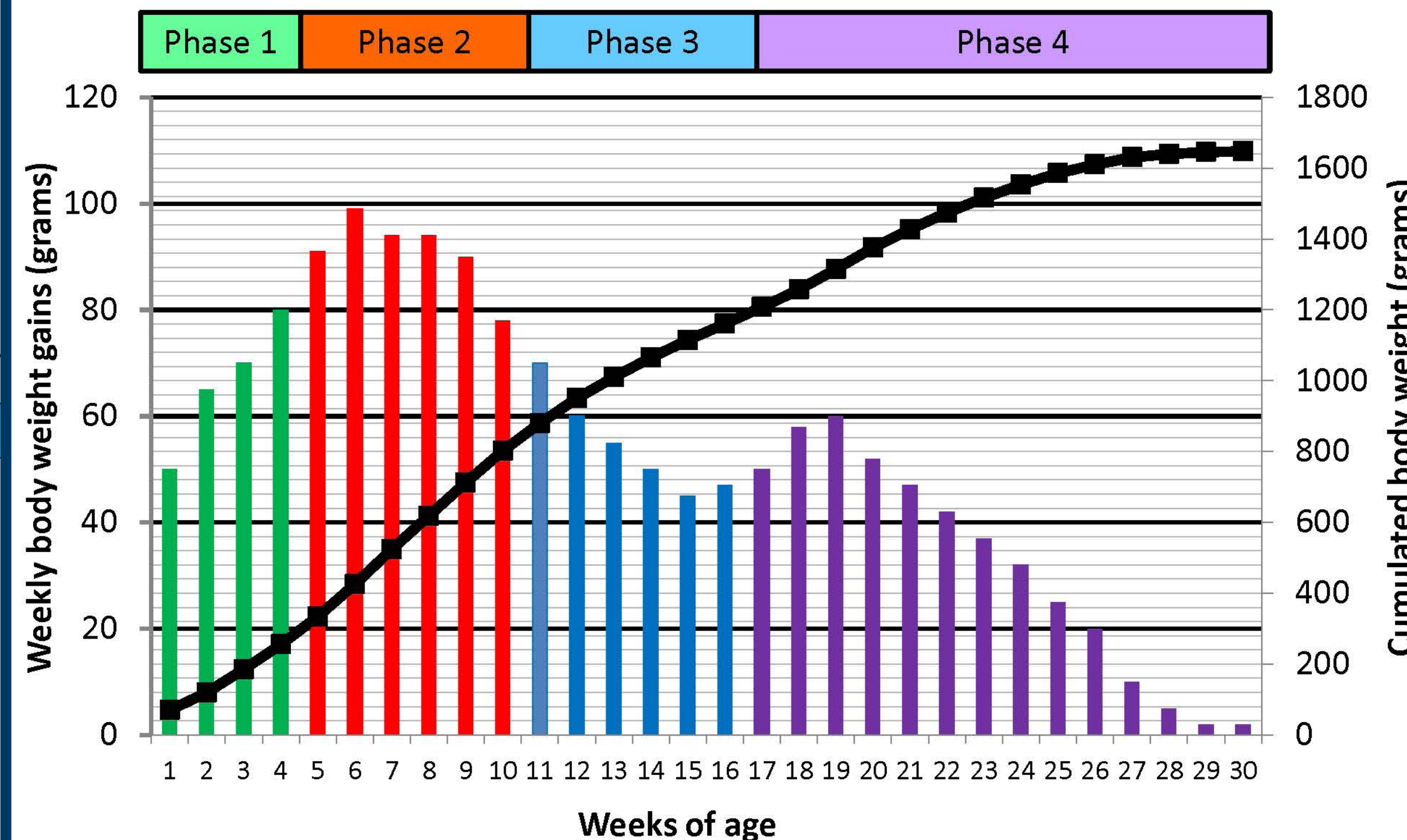
**Nutrition Tips:**

- Birds become more responsive to energy levels and adapt the feed intake accordingly.
- Use Pre-Lay diet (2.75% Ca) with the first light stimulation. Feed for 7–10 days until start of egg production. Avoid excessive weight gain during this period.
- Birds should have 0.4–0.7 cm of abdominal fat pad.

**Space Recommendations**

	Brooding Period (0–6 weeks)	Growing Period (7–16 weeks)	Laying Period (17–90 weeks)
Cage Floor Space (sq. in./bird)	40	60	65
Feeder (linear in./bird)	2.25	4	4
Nipple Drinking System	1 per 4 birds	1 per 5 birds	1 per 4 birds

## Phases of Growth in Pullets

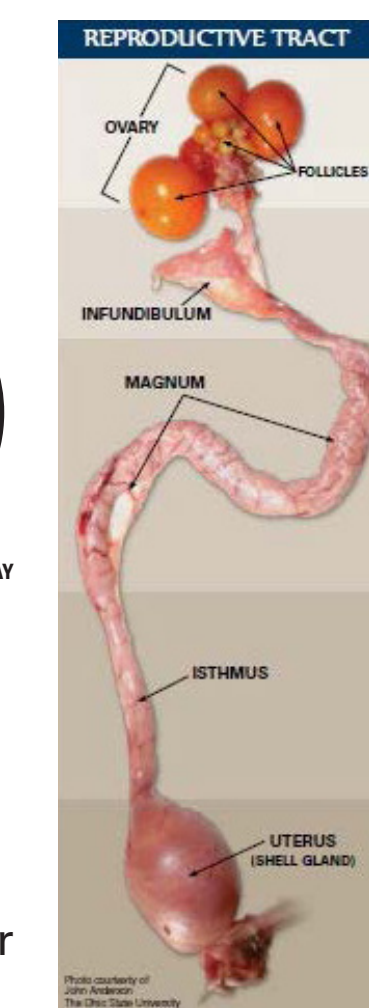
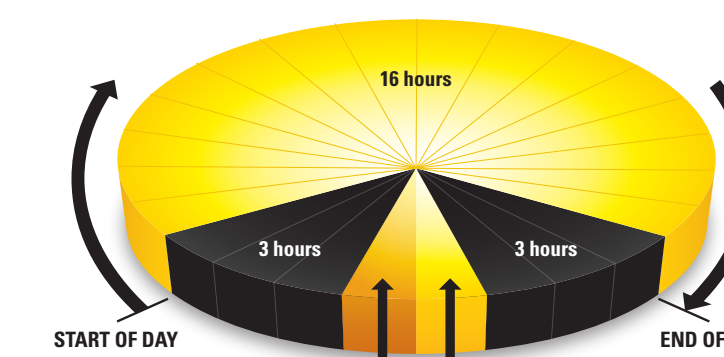


## PHASE 4 (17–30 wk) – Target Body Weight 1600 g

### RAPID GROWTH AND DEVELOPMENT OF THE OVARY AND REPRODUCTIVE TRACT; EGG PRODUCTION BEGINS; CONTINUED ABDOMINAL FAT DEPOSITION.

**Management Tips:**

- Give light stimulation when body weight reaches 1.17–1.20 kg.
- Ensure that light intensity in the laying house is higher than in rearing.
- First light stimulation is 1 hour, followed by 15–30-minute increases every week up to 16 hours maximum.
- Midnight feeding should be used during the peaking period to support high egg production.



**Nutrition Tips:**

- Feed a pre-peak diet with higher nutritional energy from start of egg production to peak.
- For best peaks and persistency, use Peaking diets with Methionine + Cystine : Lysine ratios of >90%.
- Periodic adjustment of feed formulation to match the actual flock feed intake. Be prepared for heat stress periods during the summer season.

### FOR MORE INFORMATION

Growing Management of Commercial Pullets Technical Update



TAMIL



TELUGU



ENGLISH

W-80 Management Guide (India Edition)

