

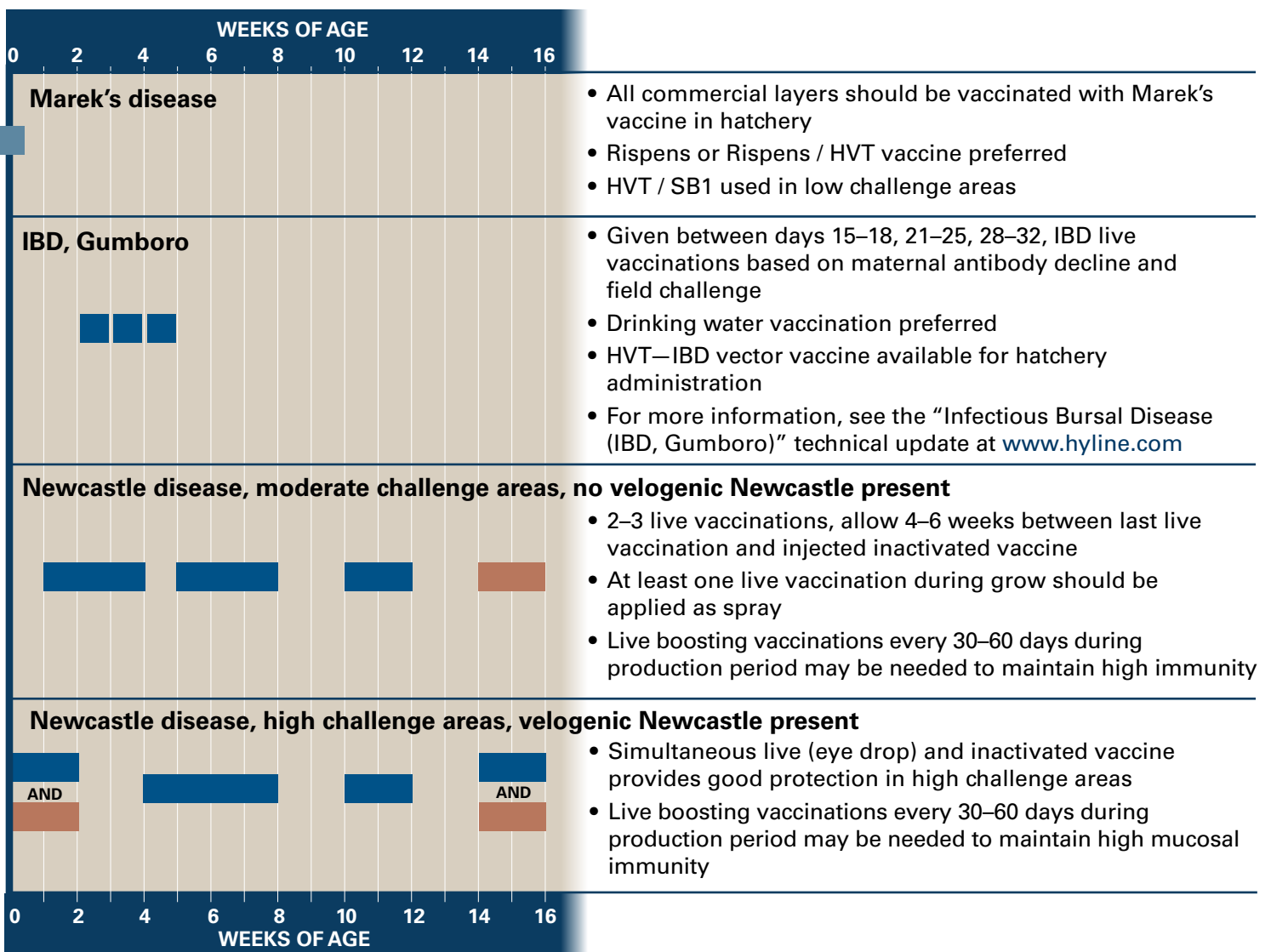


VACCINATION RECOMMENDATIONS

Certain diseases are too widespread or difficult to eradicate and require a routine vaccination program. In general, all layer flocks should be vaccinated against Marek's disease, Newcastle disease (NDV), infectious bronchitis (IB), infectious bursal disease (IBD or Gumboro), avian encephalomyelitis (AE) and fowl pox. Other vaccinations are added to the program as local disease challenges dictate.

A single program cannot be recommended for all regions. Follow label instructions provided by the vaccine manufacturer. Use only approved vaccines. Consult with local veterinarians to determine the best vaccination program for your area.

BASIC COMMERCIAL LAYER VACCINE APPLICATIONS



- All commercial layers should be vaccinated with Marek's vaccine in hatchery
- Rispens or Rispens / HVT vaccine preferred
- HVT / SB1 used in low challenge areas

- Given between days 15–18, 21–25, 28–32, IBD live vaccinations based on maternal antibody decline and field challenge
- Drinking water vaccination preferred
- HVT–IBD vector vaccine available for hatchery administration
- For more information, see the “Infectious Bursal Disease (IBD, Gumboro)” technical update at www.hyline.com

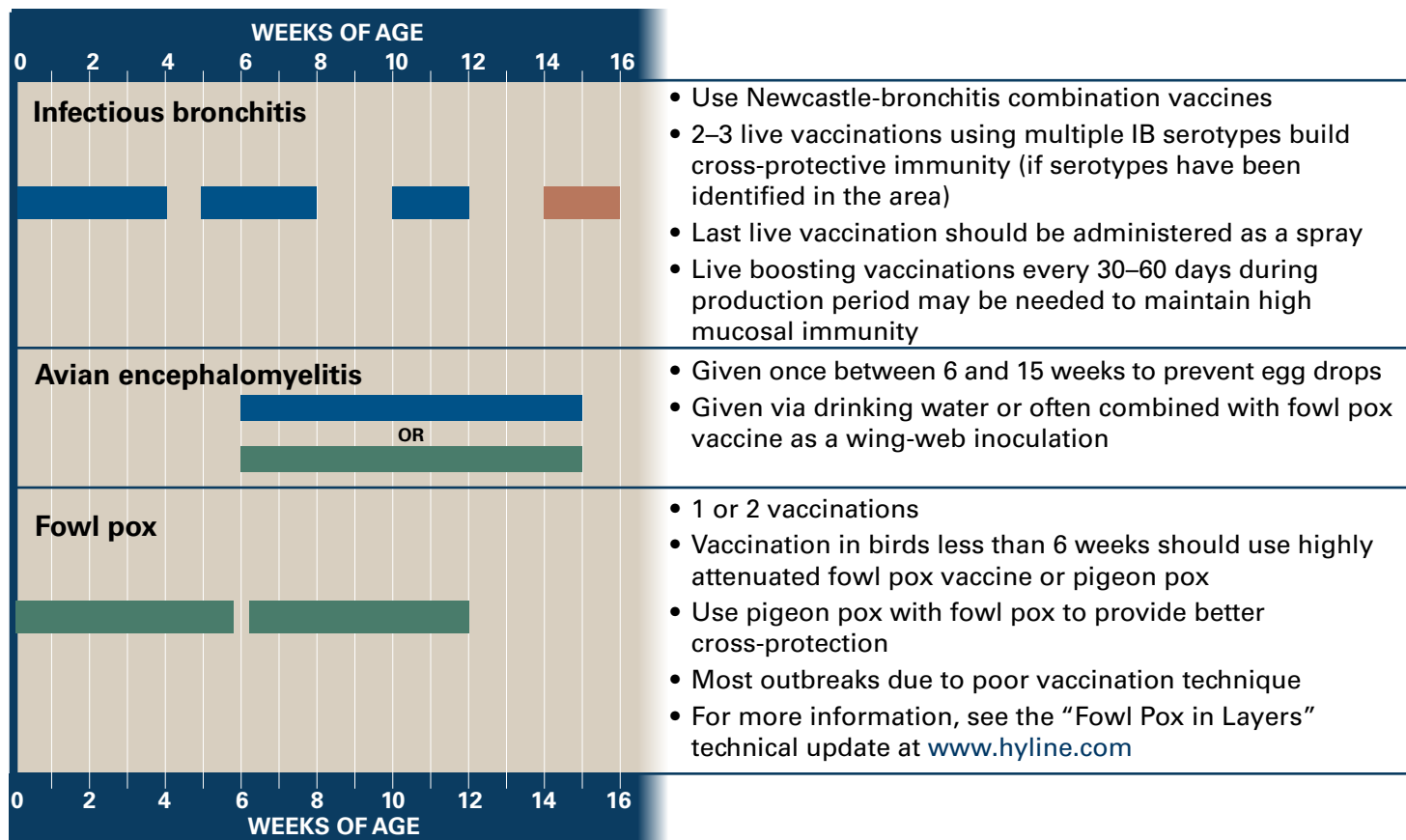
- Newcastle disease, moderate challenge areas, no velogenic Newcastle present**
- 2–3 live vaccinations, allow 4–6 weeks between last live vaccination and injected inactivated vaccine
 - At least one live vaccination during grow should be applied as spray
 - Live boosting vaccinations every 30–60 days during production period may be needed to maintain high immunity

- Newcastle disease, high challenge areas, velogenic Newcastle present**
- Simultaneous live (eye drop) and inactivated vaccine provides good protection in high challenge areas
 - Live boosting vaccinations every 30–60 days during production period may be needed to maintain high mucosal immunity

█ Live hatchery vaccines, given subcutaneous
 █ Live vaccines, administered by drinking water, spray or eyedrop

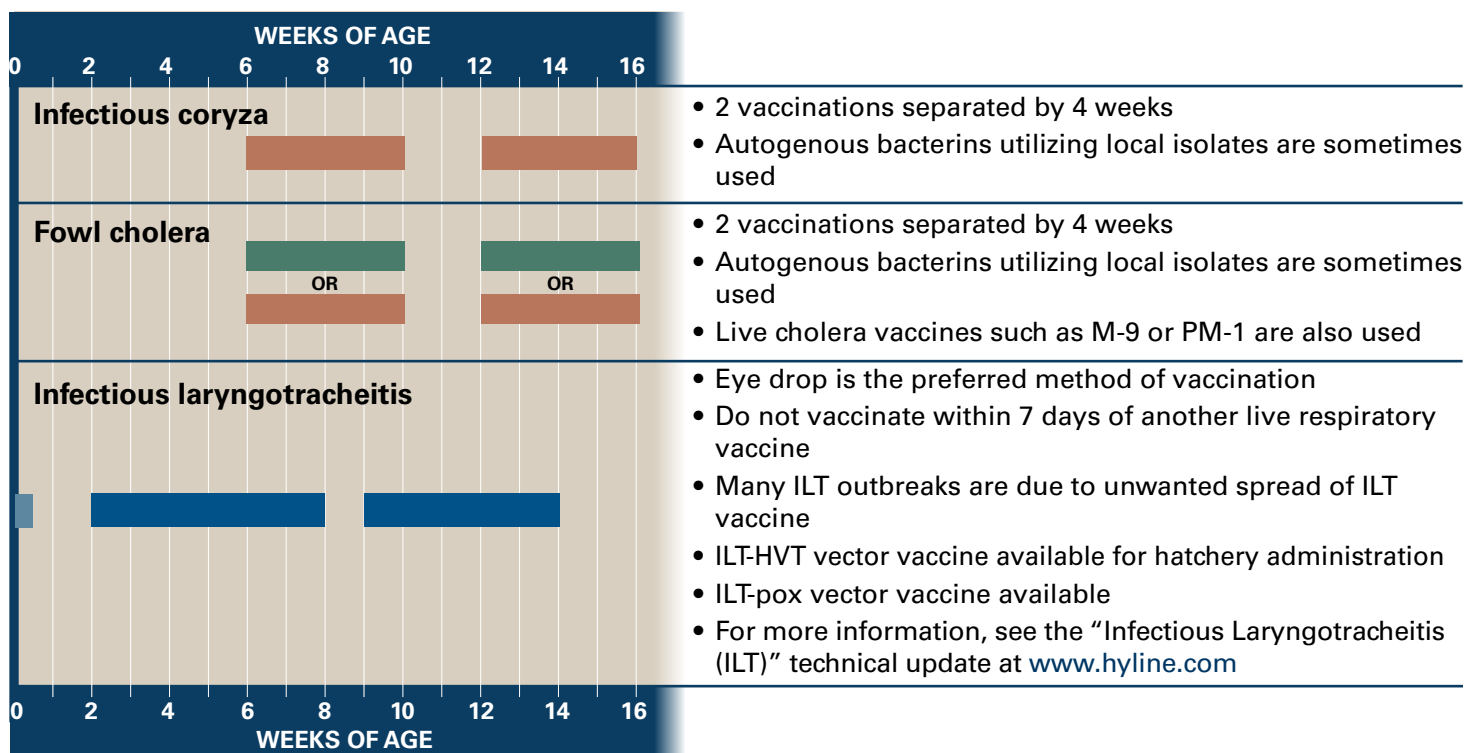
█ Live vaccines, administered via wing-web inoculation
 █ Inactivated vaccines, injected via intramuscular or subcutaneous route

BASIC COMMERCIAL LAYER VACCINE APPLICATIONS (CONTINUED)

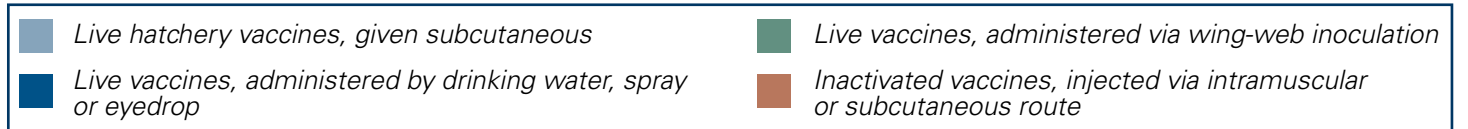
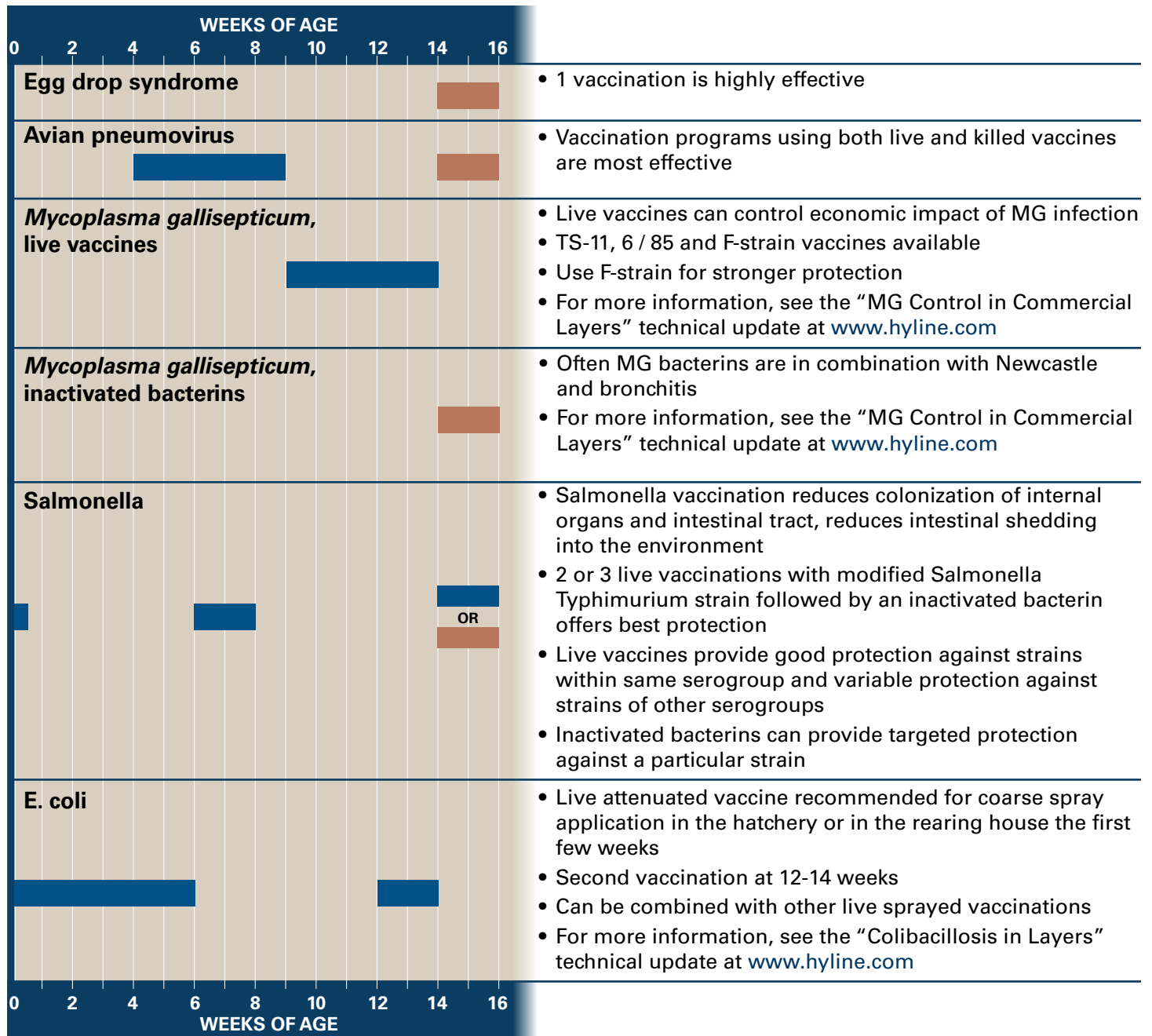


OPTIONAL COMMERCIAL LAYER VACCINE APPLICATIONS

Use if these diseases are prevalent in the area. Follow label instructions provided by the vaccine manufacturer. Use only approved vaccines. Consult a local veterinarian for advice in designing an effective vaccination program for your farm.



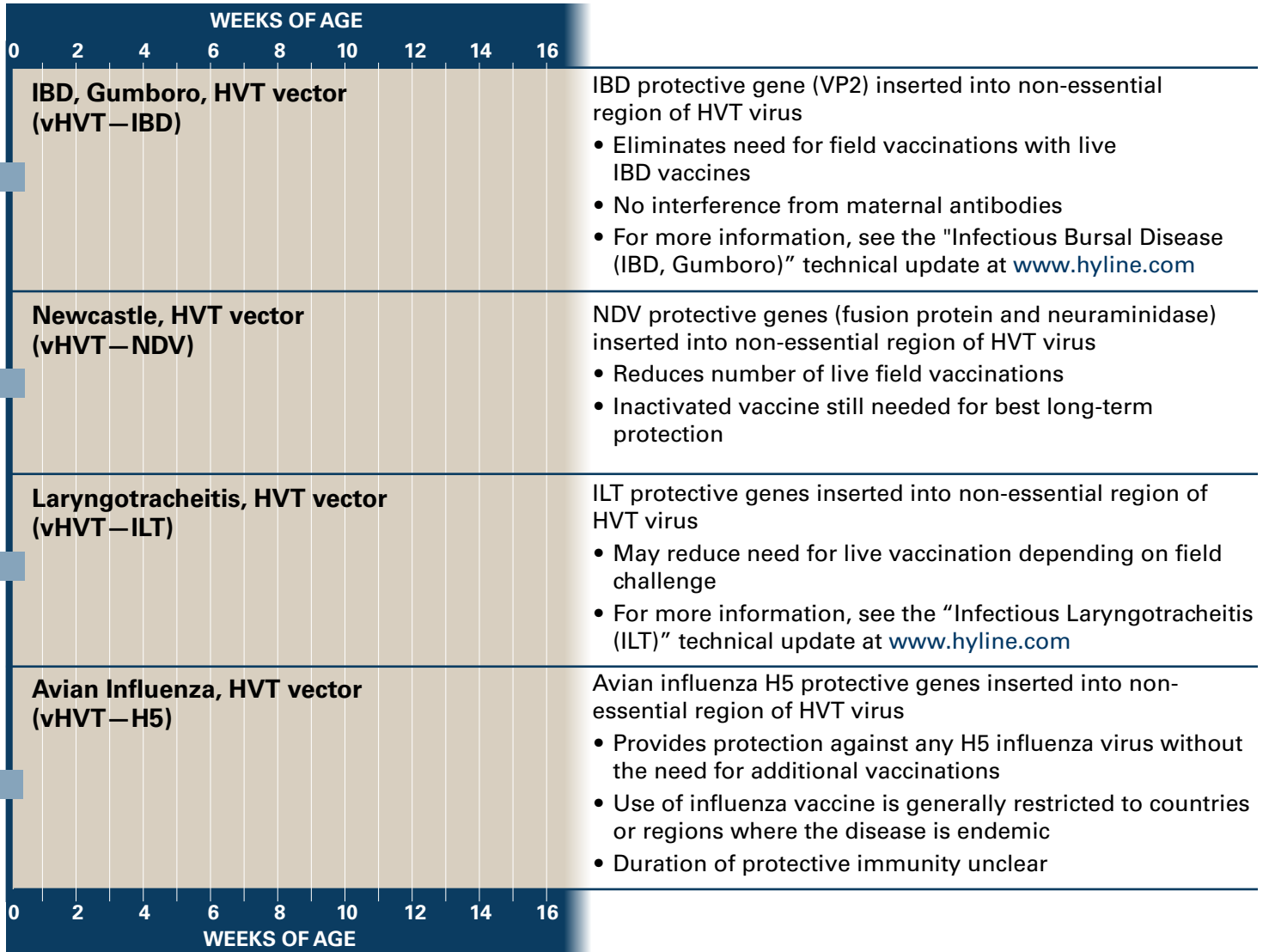
OPTIONAL COMMERCIAL LAYER VACCINE APPLICATIONS (CONTINUED)



RECOMBINANT HVT VACCINES

Vaccines using recombinant vector technology offer the convenience of hatchery administration with no adverse effects caused by some live field vaccinations. For best Marek's disease protection use Rispens vaccine in combination with recombinant HVT vaccine.

CAUTION: Do not use another HVT vaccine when using HVT-vectored vaccines.



- Live hatchery vaccines, given subcutaneous
- Live vaccines, administered by drinking water, spray or eyedrop

- Live vaccines, administered via wing-web inoculation
- Inactivated vaccines, injected via intramuscular or subcutaneous route



Hy-Line International | www.hyline.com

